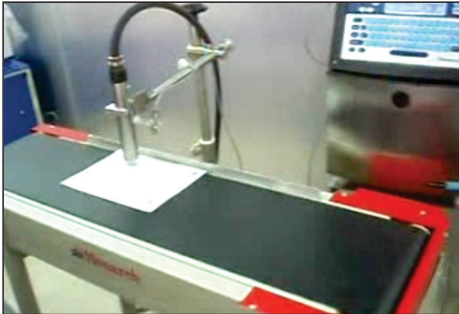


## Conveyor



### CONVEYOR

We Provide Belt Conveyors, Roller Conveyors, Flap Top Chain Conveyors & Teflon Belt Conveyors for Inkjet Printers, Bakery, Snack Foods, Beverages Industries, Cartoning Machine & Strapping Machine.

\* Available in various sizes varying in length & width.

### TECHNICAL SPECIFICATIONS:

Machine Dimension	L-52" x W-20" x H-36"
Conveyor Speed	Variable
Power Consumption	75 Watt
Power Supply	1 ph.
Weight	40 Kg.

• Manufacturer reserves all rights to change product specification & its design without prior intimation.